

LONGLAND

Born to be pride

focus on each scarf quality

regan@longlandtextile.com

www.bestscarfs.com

HEAT TRANSFER

- **PROCESS 01 NEW CAD**

Our cad team will help make new cad and perfect it match with the digital printed machine, including the size, colors, etc. after get the original art files from clients.

Here we suggest all art files are better with the TIFF format.

HEAT TRANSFER

- **PROCESS 02 PRINTED THE ART ON THE PAPER**

Through the digital printed machines, the patterns will print on the paper, in order to get the best colors saturation, permeation of scarves, we choose the best quality papers and inks.

The printing speed is also very important, as slow as possible that will guarantee the inks even on the paper.

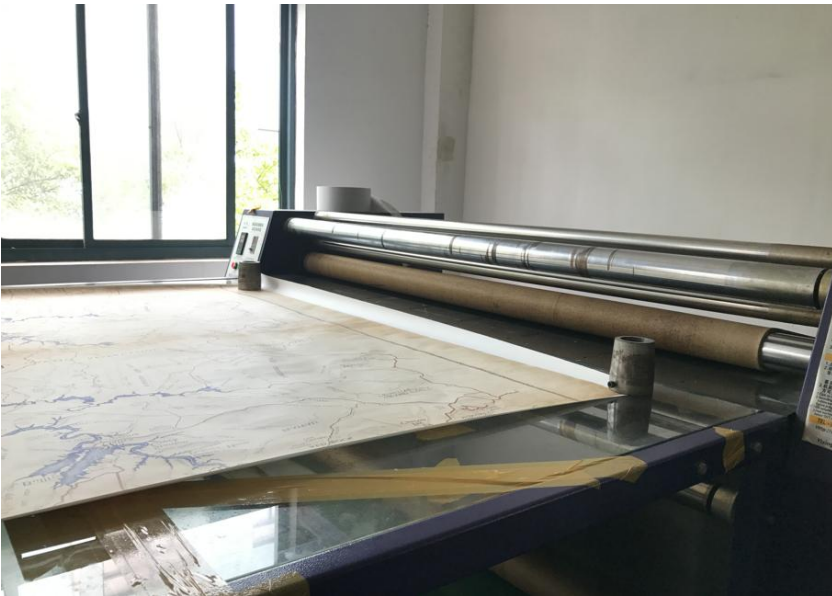


HEAT TRANSFER

- **PROCESS 03 TRANSFER THE PATTERNS FROM PAPER TO FABRICS**

Through the super high temperature and heavy pressure, the patterns will transfer from the papers to the fabrics, better quality papers and slow speed of the machines can get better colors effects on the fabrics.

Step 01 Put the printed paper on the table as flat as possible

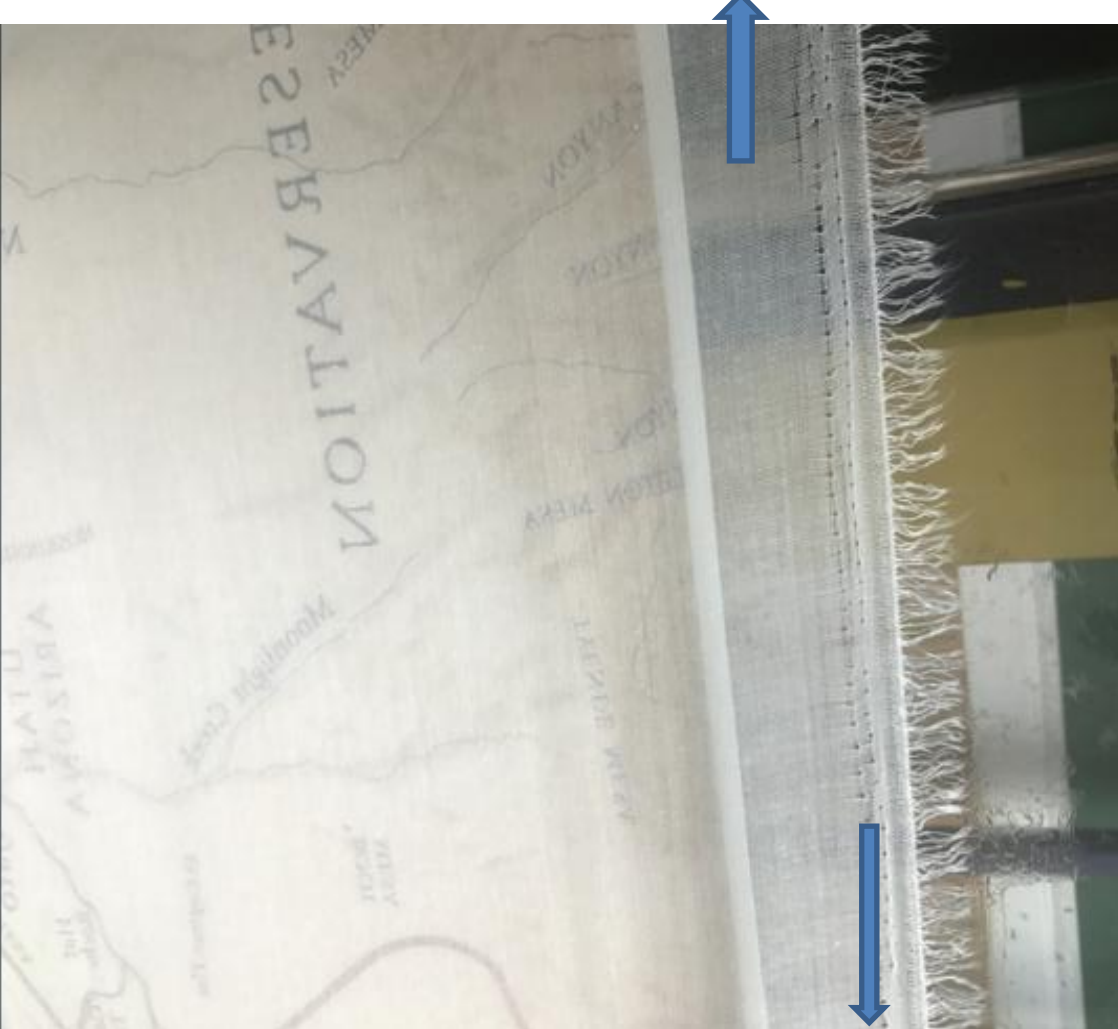


HEAT TRANSFER

Step 02 Place the fabrics above and close to the papers



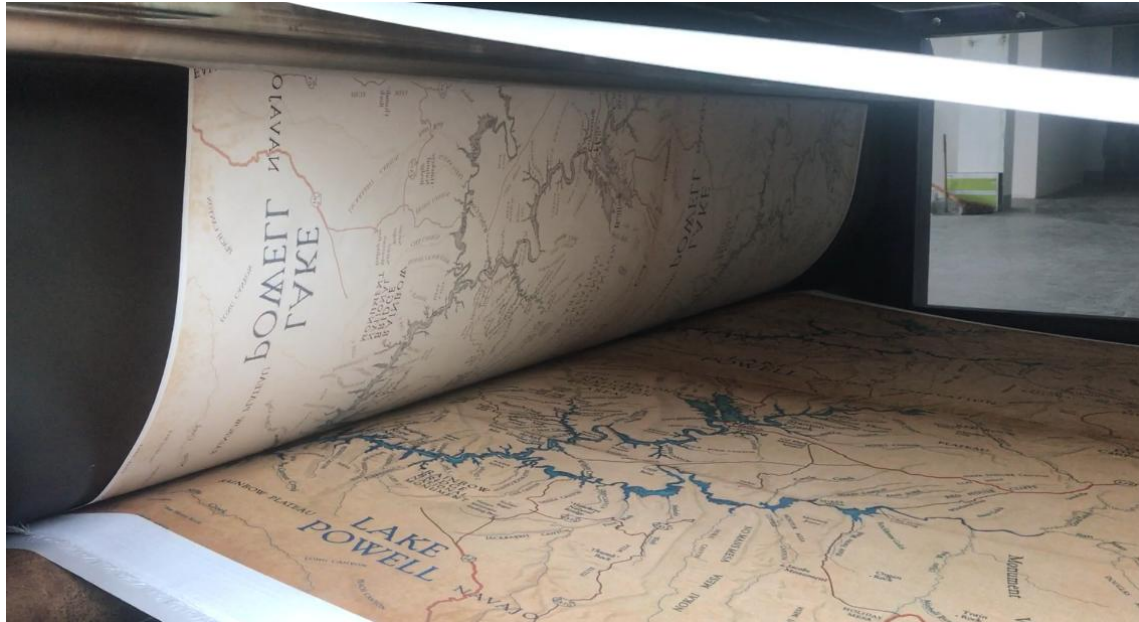
Normally we have to leave extra 5cm of each edge to guarantee the whole pattern won't print on the edges that can not see



you can see the small holes on the edges, which were from the process of fabrics pretreatment / fabrics setting to keep the fabrics as flat as possible.

in general most suppliers only do the fabric pretreatment once, but we do twice

Step 03 THE PATTERNS ON THE FABRICS



THANK YOU SO MUCH FOR THE LOOKING

LONGLAND

Born to be pride

focus on each scarf quality